

1. Config. OPCLink

1. Configure---Topic Definition---New

OPCLink Topic Definition

Topic Name:

Node Name:

OPC Server Name:

OPC Path:

Update Interval: ms Enable access to update interval

Poke asynchronously Mode After Poke:

Transaction Timeout: ms

Poke mode:

- Control mode
- Transition mode
- Full optimization

Lifecycle Settings

Lifecycle

Timeout: ms

OK Cancel Browse Help

Topic Definition

Topics

- PLC1

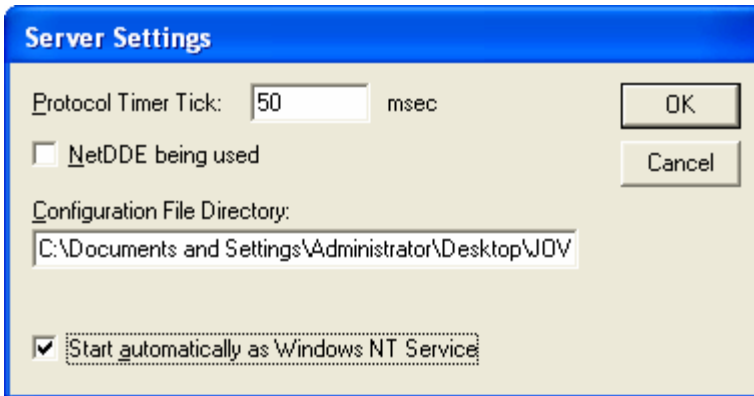
Done

New...

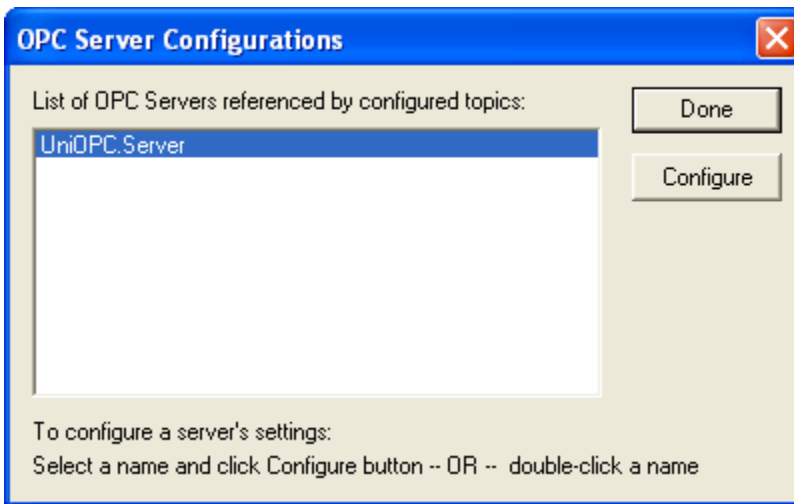
Modify...

Delete

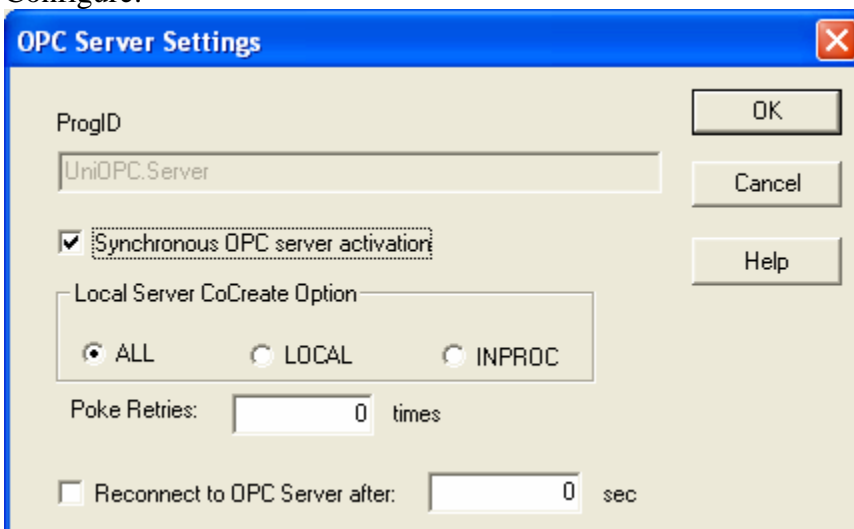
- **Server Settings**



- **OPC Server Configuration**

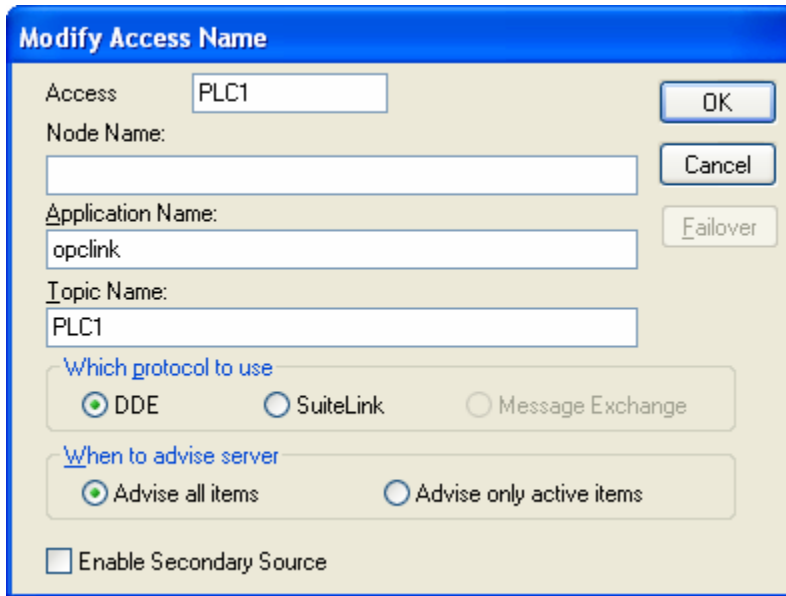


Configure:



2. InTouch Window maker

Special---Access Names---ADD



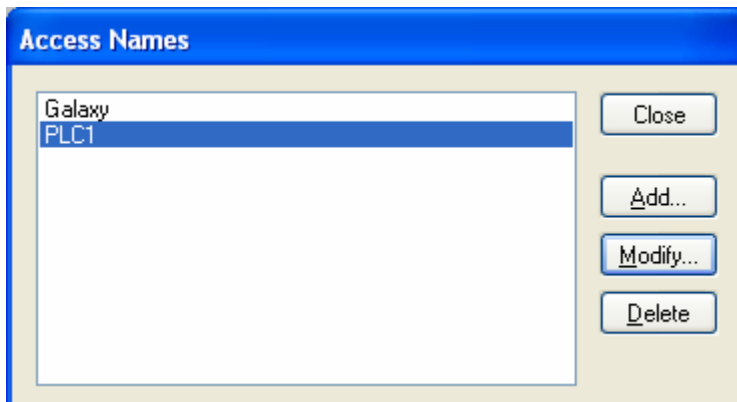
The 'Modify Access Name' dialog box contains the following fields and options:

- Access:** Text box containing 'PLC1'. Buttons: OK, Cancel, Failover.
- Node Name:** Empty text box.
- Application Name:** Text box containing 'opclink'.
- Topic Name:** Text box containing 'PLC1'.
- Which protocol to use:** Radio buttons for DDE (selected), SuiteLink, and Message Exchange.
- When to advise server:** Radio buttons for Advise all items (selected) and Advise only active items.
- Enable Secondary Source

Access name=PLC NAME

Topic name= Topic name defined in OPC Link

OK



The 'Access Names' dialog box features a list box with the following items:

- Galaxy
- PLC1 (highlighted)

Buttons on the right side include: Close, Add..., Modify..., and Delete.

Define tag (I took for an example MI88)

Tagname Dictionary

Main
 Details
 Alarms
 Details & Alarms
 Members

Tagname: Type:

Group:
 Read only
 Read Write

Comment:

Log Data
 Log Events
 Retentive Value
 Retentive Parameters

Initial Value: Min EU: Max EU:

Deadband: Min Raw: Max Raw:

Eng Units: Log Deadband:

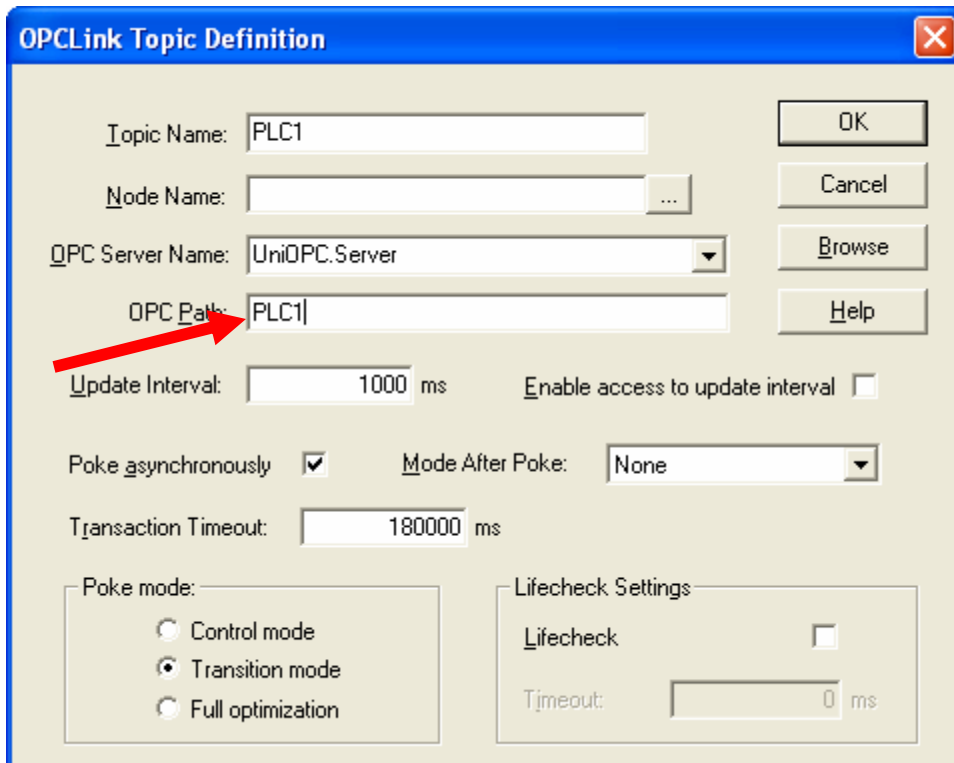
Conversion:
 Linear
 Square Root

Access Name:

Item:
 Use Tagname as Item Name

Now you have to option to define Item

1. If you define in OPCLink under " OPCLink Topic Definition" OPCPath with **PLC1** (as on pictures below)



The image shows a dialog box titled "OPCLink Topic Definition" with a close button (X) in the top right corner. The dialog contains several input fields and controls:

- Topic Name:** A text box containing "PLC1".
- Node Name:** A text box with a browse button (...).
- OPC Server Name:** A dropdown menu showing "UniOPC.Server".
- OPC Path:** A text box containing "PLC1", with a red arrow pointing to it from the left.
- Update Interval:** A text box containing "1000" followed by "ms".
- Enable access to update interval:** A checkbox that is currently unchecked.
- Poke asynchronously:** A checked checkbox.
- Mode After Poke:** A dropdown menu showing "None".
- Transaction Timeout:** A text box containing "180000" followed by "ms".
- Poke mode:** A group box containing three radio buttons: "Control mode", "Transition mode" (which is selected), and "Full optimization".
- Lifecycle Settings:** A group box containing a "Lifecycle" checkbox (unchecked) and a "Timeout" text box containing "0" followed by "ms".

On the right side of the dialog, there are four buttons: "OK", "Cancel", "Browse", and "Help".

Item syntax is i.MI88 (where "i" is an integer, or "d" is discrete, "f" is floating)

If you put (the picture below) **PLC1**.

OPCLink Topic Definition

Topic Name:

Node Name:

OPC Server Name:

OPC Path:

Update Interval: ms Enable access to update interval

Poke asynchronously Mode After Poke:

Transaction Timeout: ms

Poke mode:

- Control mode
- Transition mode
- Full optimization

Lifecheck Settings

Lifecheck

Timeout: ms

Then you write the Item as iMI88 (without point)

Tagname Dictionary

Main Details Alarms Details & Alarms Members

Tagname: Type:

Group: Read only Read Write

Comment:

Log Data Log Events Retentive Value Retentive Parameters

Initial Value: Min EU: Max EU:

Deadband: Min Raw: Max Raw:

Eng Units: Log Deadband: Conversion: Linear Square Root

Access Name:

Item: Use Tagname as Item Name

